



## Feasibility Study

Replacement club house and store

**Jefcoate Anderson Architects**

January 2025





## Forth Canoe Club, Edinburgh



Jefcoate Anderson  
**Architects**









View of Harrison Road Bridge & existing entrance to site



View of from Harrison Road Bridge



View of Harrison Road Bridge & existing steps



View south along the Union Canal  
**Existing Site Photos**





## Forth Canoe Club, Edinburgh

### Brief

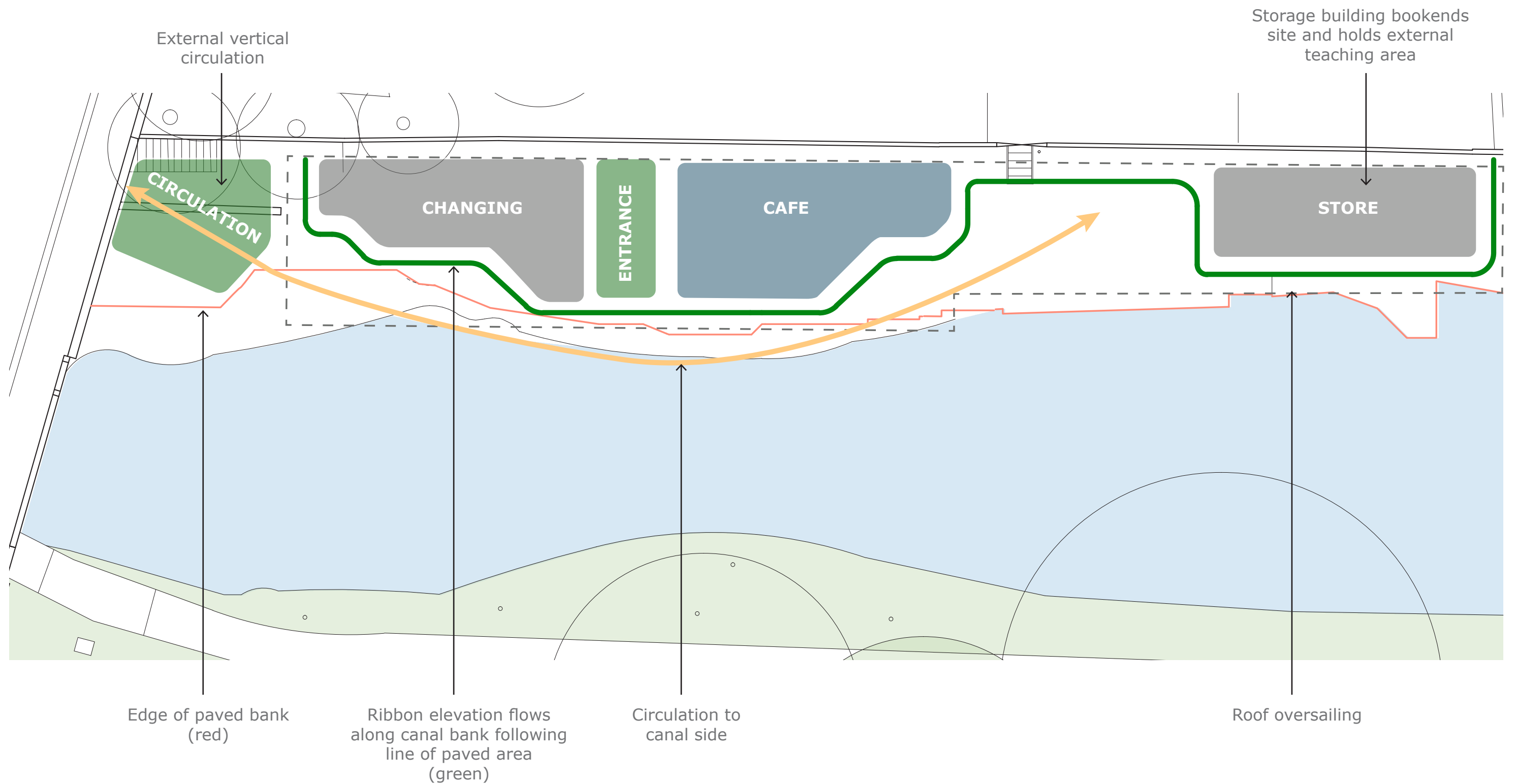
The Canoe Club has set out their requirements for improving their current offering to their members and the wider public.

- Level access from Harrison Road for public access as well as lifting boats from the road down to the canal.
- Lift access to allow for full disabled access to the canal side.
- Canoe storage and maintenance facilities
- Improve access from bank to canal, for easier launching of canoes.
- Changing and drying facilities for the club
- A heating classroom / cafe space



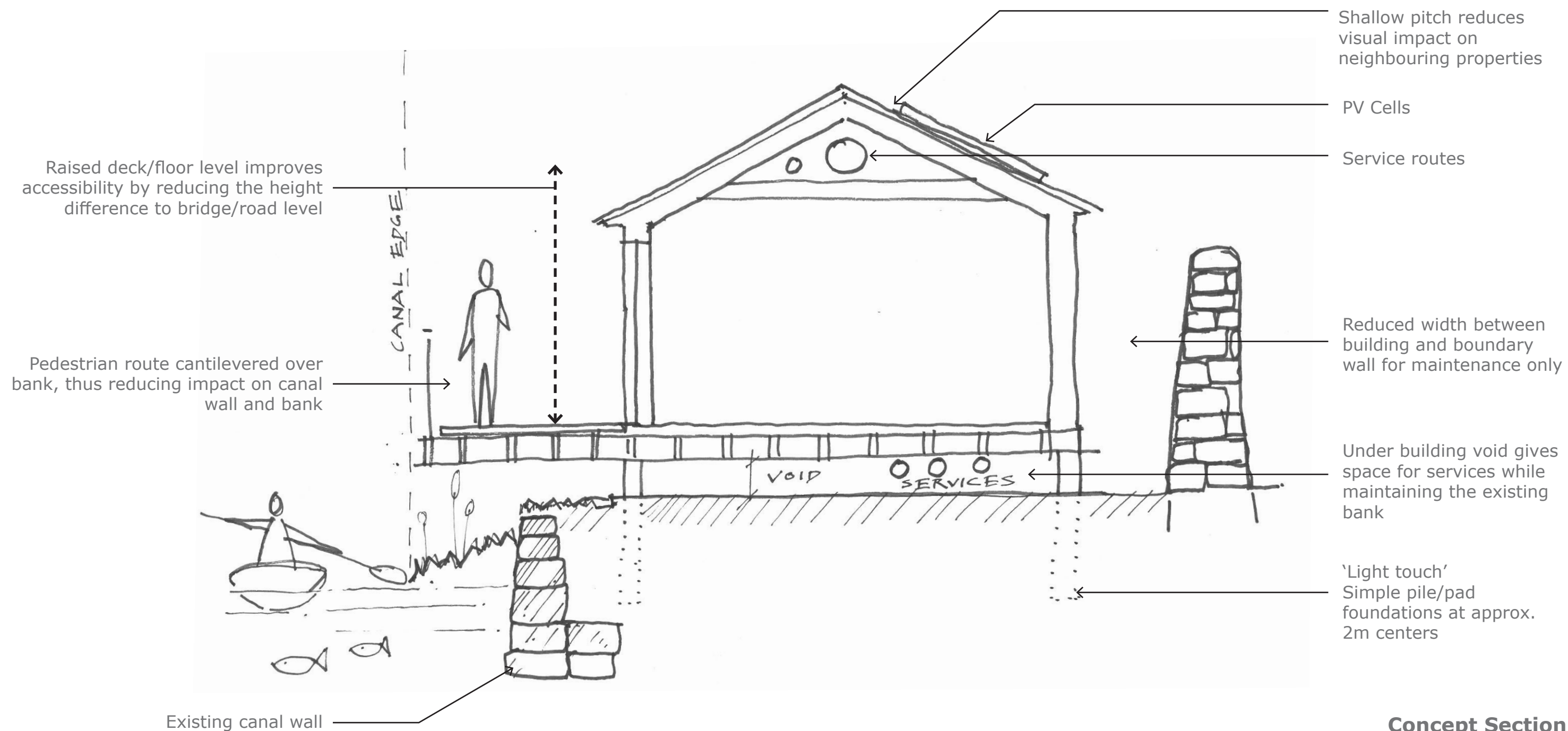
Jefcoate Anderson  
**Architects**





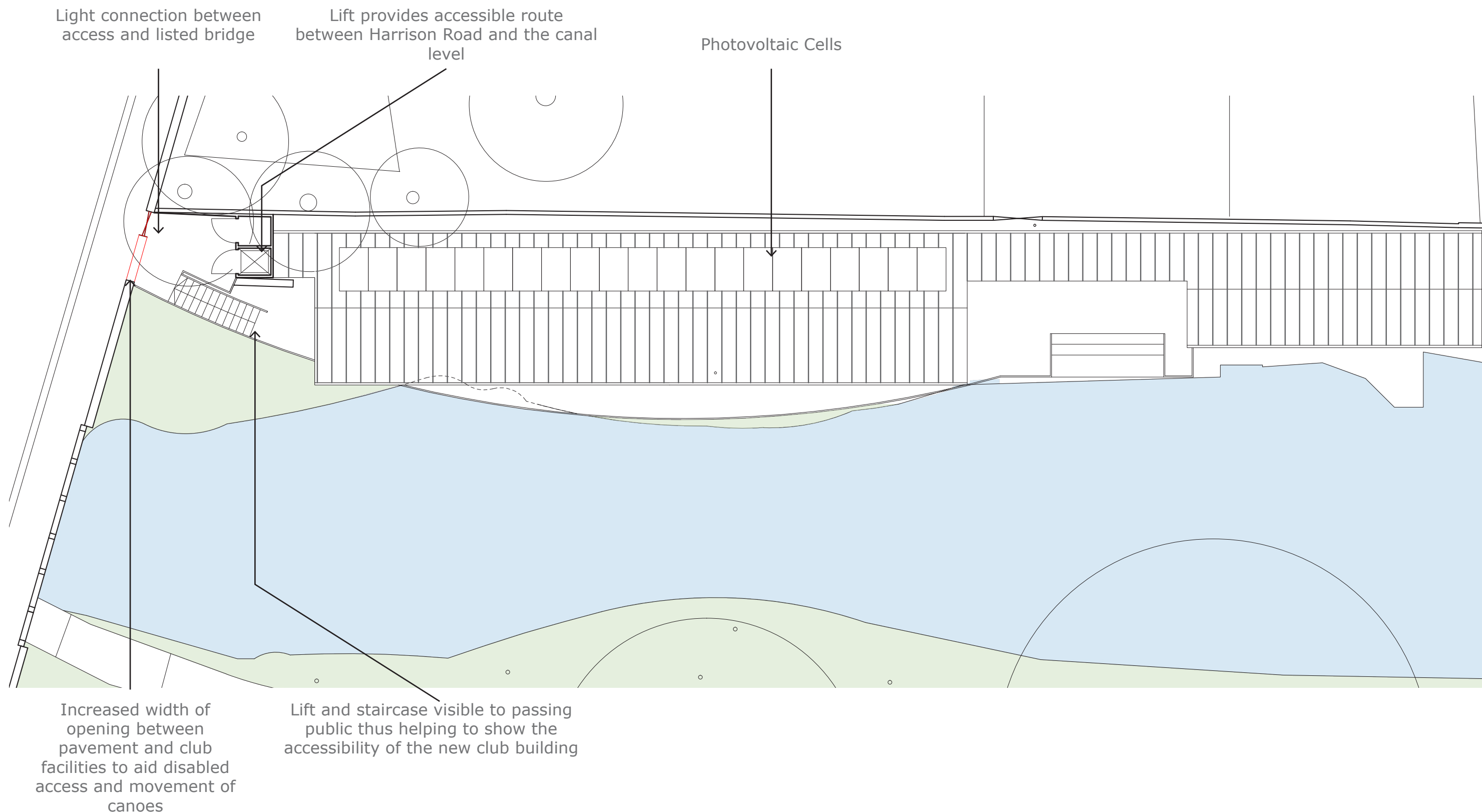
**Concept Diagram**





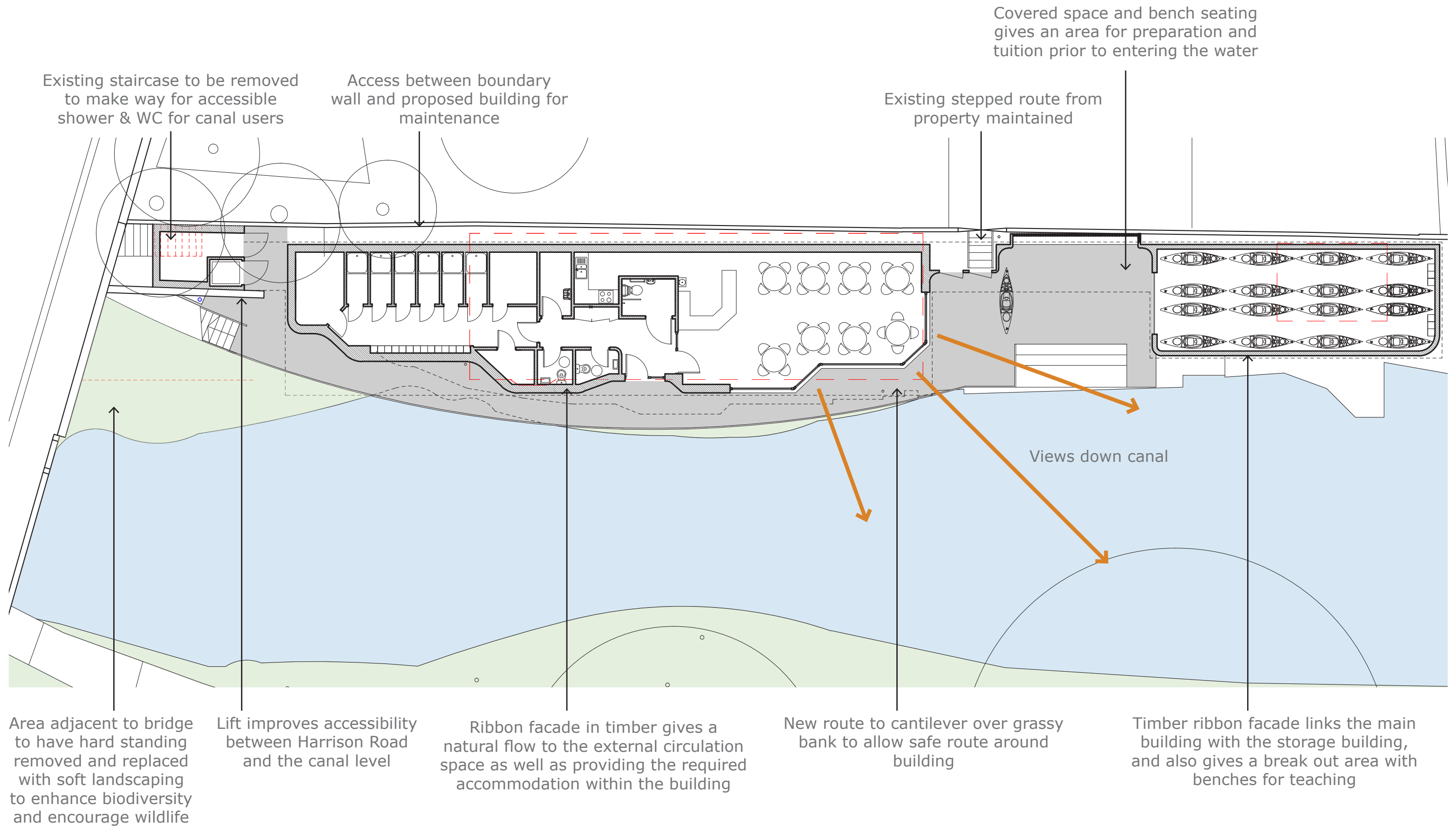
**Concept Section**





## Bridge Level Building Concept





## Canal Level Building Concept





External staircase  
and simple lift give  
minimal connection to  
listed bridge

Single storey  
club house and  
storage buildings  
reduce massing

Cafe and  
teaching  
space provide  
community hub

Storage building  
'book-ends' the  
site

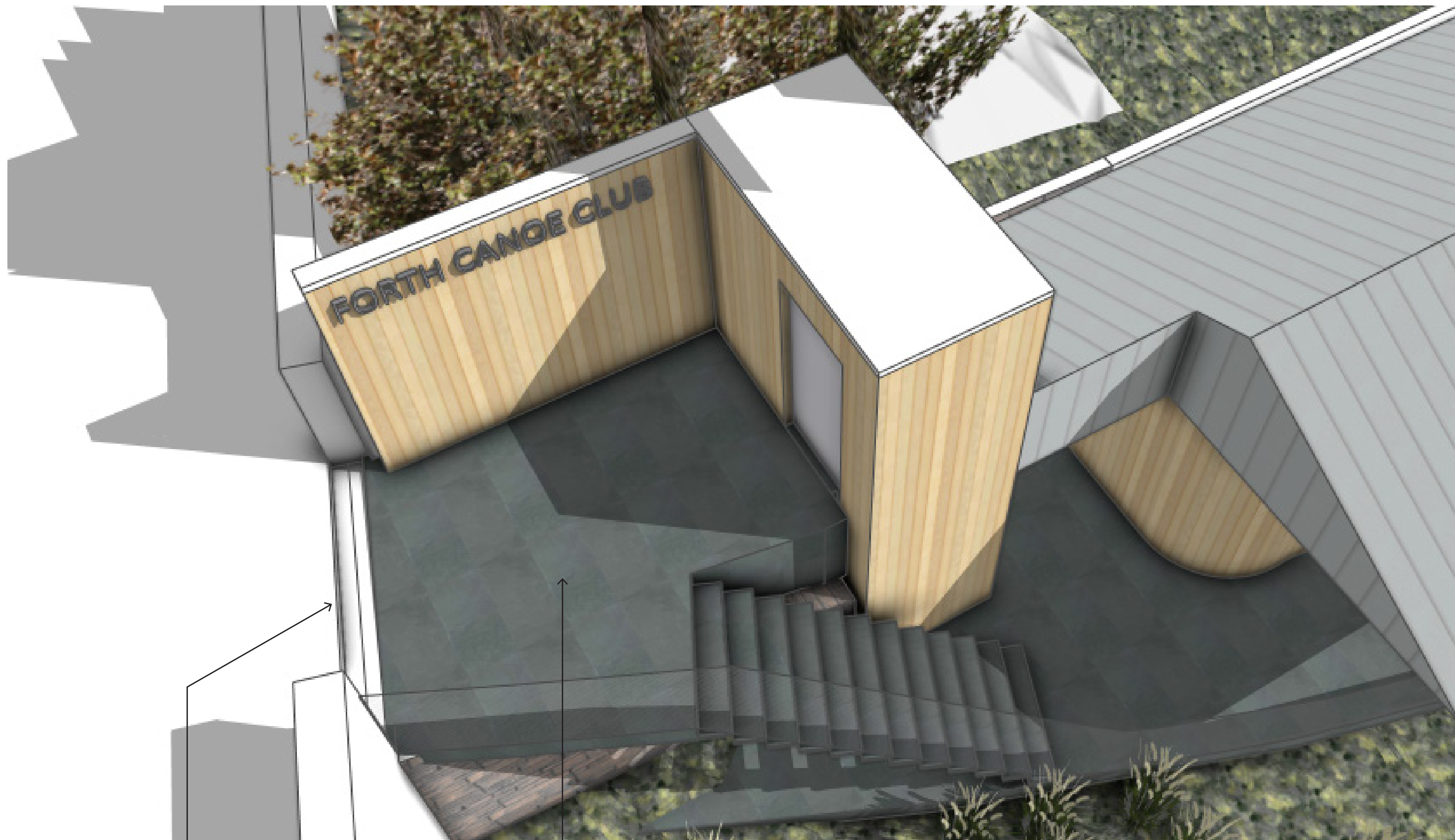
**View from Harrison Bridge  
Concept 3D Massing**

**Forth Canoe Club, Edinburgh**



**Jefcoate Anderson  
Architects**





Gate to be  
formed to close  
off entrance

Landing for  
staircase and lift

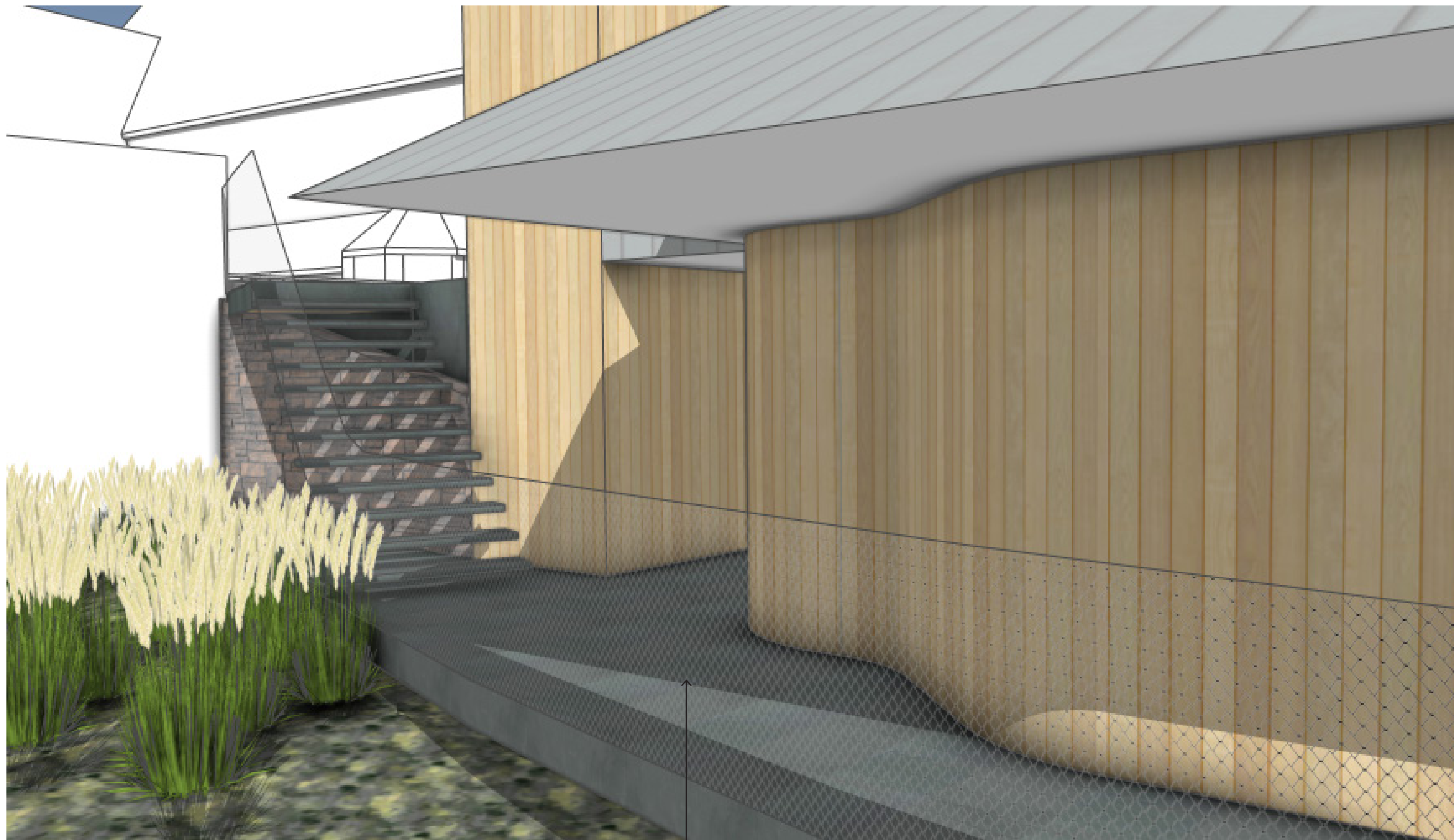
Entrance from Harrison Bridge

**Forth Canoe Club, Edinburgh**



Jefcoate Anderson  
**Architects**





Wider space at base of  
stairs to aid transfer of  
canoes

**Entrance steps from Harrison Bridge**

**Forth Canoe Club, Edinburgh**



**Jefcoate Anderson  
Architects**





Viewing location  
at canal level to  
watch tuition in  
progress

Covered area to  
brief students  
prior to entering  
the water

Storage building  
'book-ends' the  
site

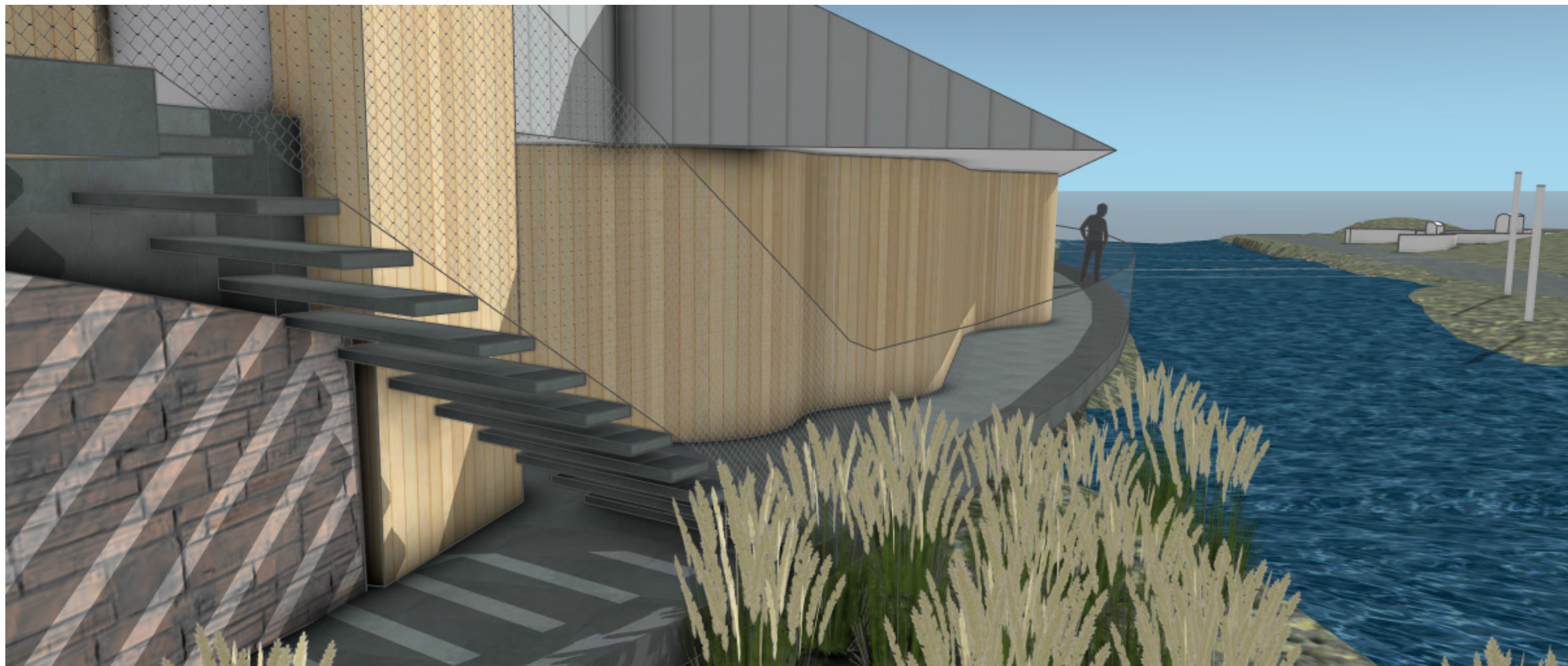
**View from Harrison Park  
Concept 3D Massing**

**Forth Canoe Club, Edinburgh**



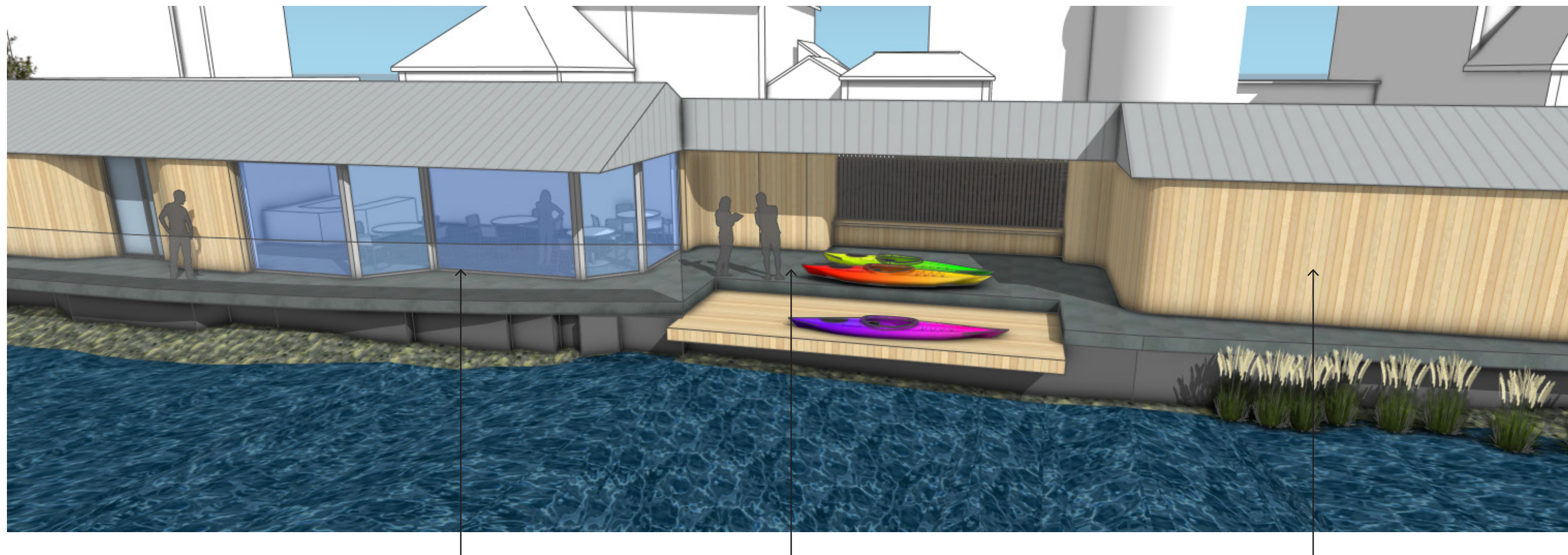
**Jefcoate Anderson  
Architects**





Walkway to front of club house





Cafe

Teaching/Social  
Area with built in  
bench seating

Store

Cafe / Teaching Space / Store

**Forth Canoe Club, Edinburgh**

 **Jefcoate Anderson  
Architects**





Cafe / Teaching Space

**Forth Canoe Club, Edinburgh**



Jefcoate Anderson  
**Architects**

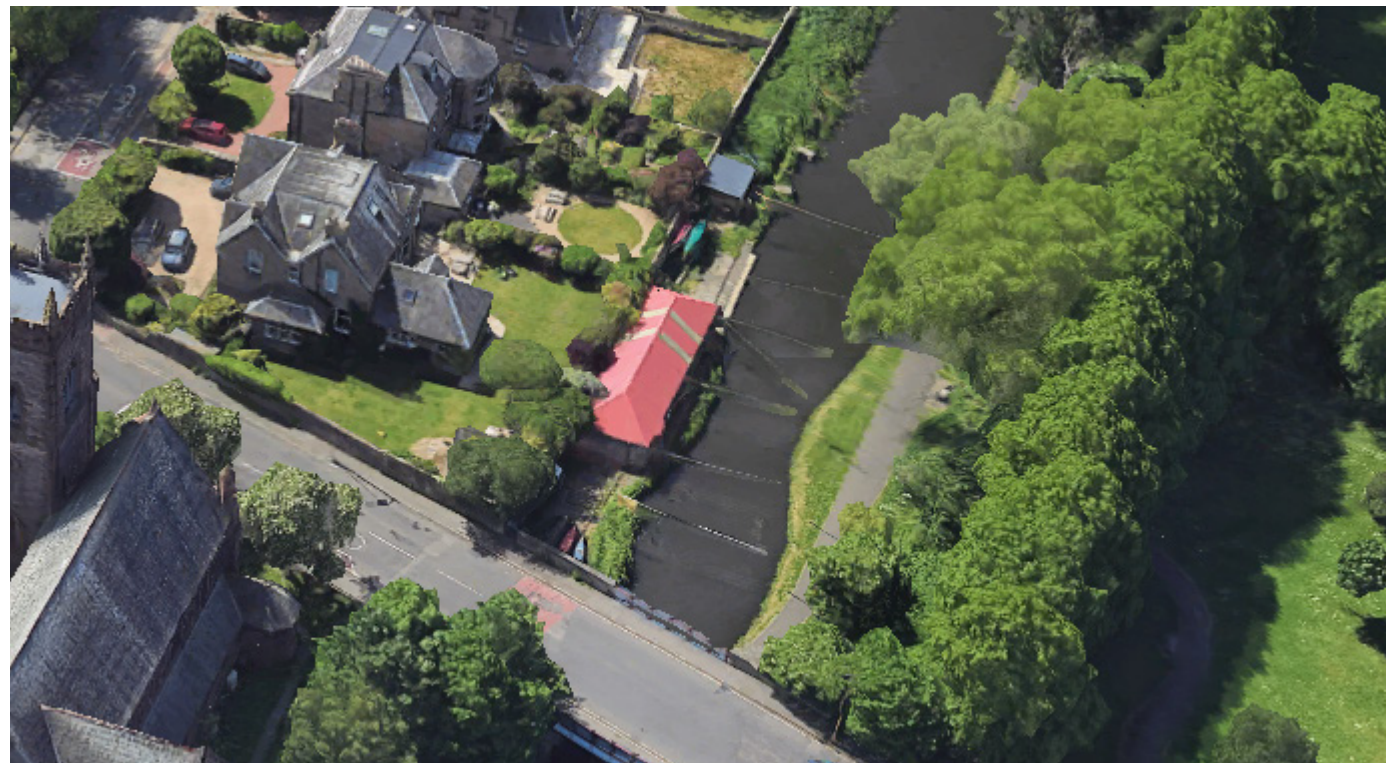
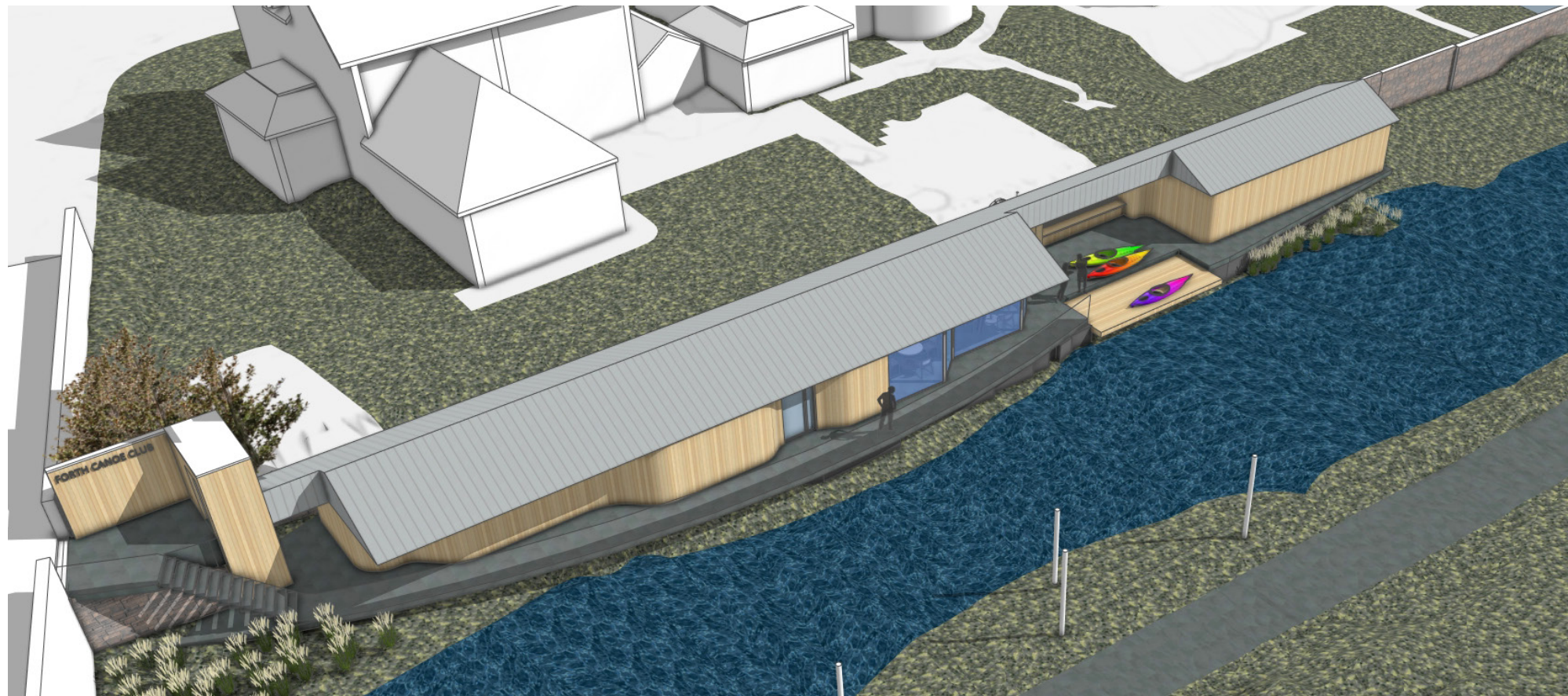




### Material Ideas

We are looking at using a simple pallet of soft timber and zinc, which compliment the setting of the park, canal and adjacent bridge.





Existing Site & Concept Site Massing